

Critical event management platform update

October 2023 | What's new?



Everbridge 360™ revolutionizes the management of critical events with the industry's most comprehensive and unified interface.

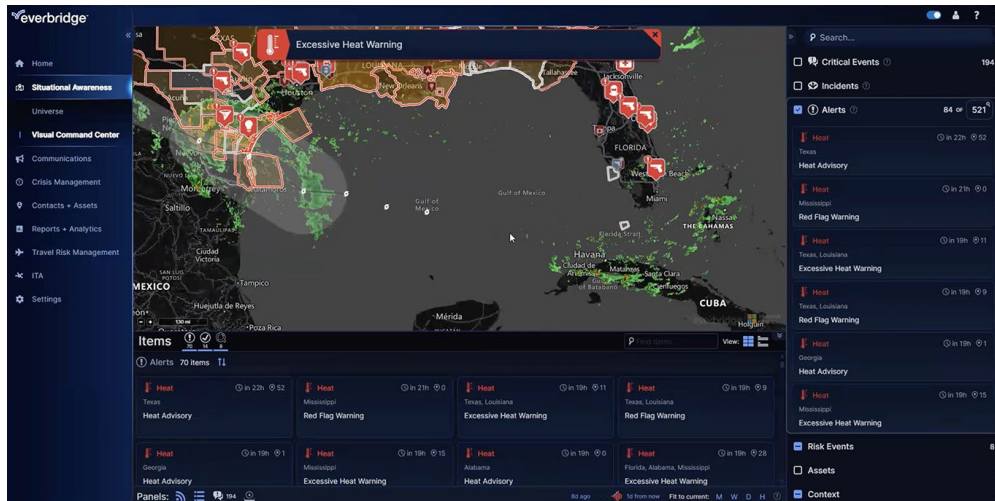
We are excited to announce our latest CEM platform update, packed with powerful features and enhancements designed to help organizations optimize their response efforts and achieve a higher level of resilience. This release introduces Everbridge 360™, designed to streamline your incident response operations. Additionally, we have made significant updates to Resilience Insights and Everbridge Travel Protector.

With these new additions, we are committed to providing you with the tools and intelligence necessary to navigate today's complex risk landscape while ensuring the well-being of your employees. We invite you to explore the details of our new release and discover how it can empower your organization to proactively address challenges, enhance resilience, and streamline operations.

Stay tuned for more updates as we continue to innovate and deliver solutions that align with your evolving needs.

Everbridge 360™

Your unified critical event management solution



With Everbridge 360™, users can seamlessly transition between applications, providing an improved experience that ensures faster, more accurate, and reliable response and communications.

- Refreshed user interface: Everbridge 360™ offers a visually appealing, intuitive, and user-friendly interface.
- Simplified workflows: Experience the power of streamlined communications and simplified processes.
- Customizable critical event configuration: Tailor critical events to your organization's unique needs and leverage Everbridge's pre-defined event categories for seamless incident response to any situation.
- Improved platform experience: Smoothly transition between Visual Command Center (VCC) and Everbridge Suite (EB Suite).
- Enhanced features: New features for faster communication and reduced errors. Optimized features make onboarding a breeze, ensuring you hit the ground running.

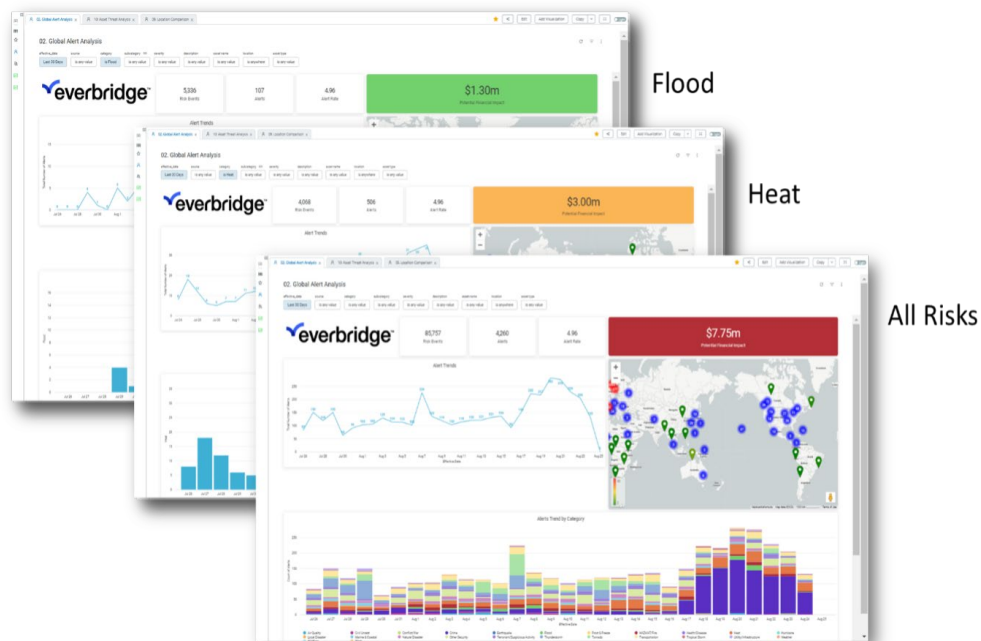
Everbridge 360™ is available with the following products and solutions:

- [Mass Notification](#)
- [Safety Connection](#)
- [Travel Protector](#)
- [CEM Business Operations solution](#)
- [CEM People Resilience solution](#)

Everbridge 360™ is globally available. By default, the new interface is not turned on. Please contact your Everbridge administrator to activate Everbridge 360™ today. Reach out to your Everbridge Account Manager if you have any questions or need additional support. For more detailed information, please refer to our Everbridge 360™ videos on our [Everbridge University](#).

Resilience Insights – quantifiable business risk

Improved analytics to help correlate critical events with potential real-world business impact.



Everbridge Resilience Insights enables organizations to quantify business risk in terms stakeholders can understand:

- Calculate potential business impact by different metrics (\$\$\$, units, test participants, daily sales, criticality, and more).
- Dynamically calculate the potential business impact across category, subcategory, severity, time, geography, and more.
- Segment alert dashboards across asset tags to align with CEM orchestration advanced alerting workflows.

View [Everbridge Resilience Insights user guide](#).

This add-on capability is available to:

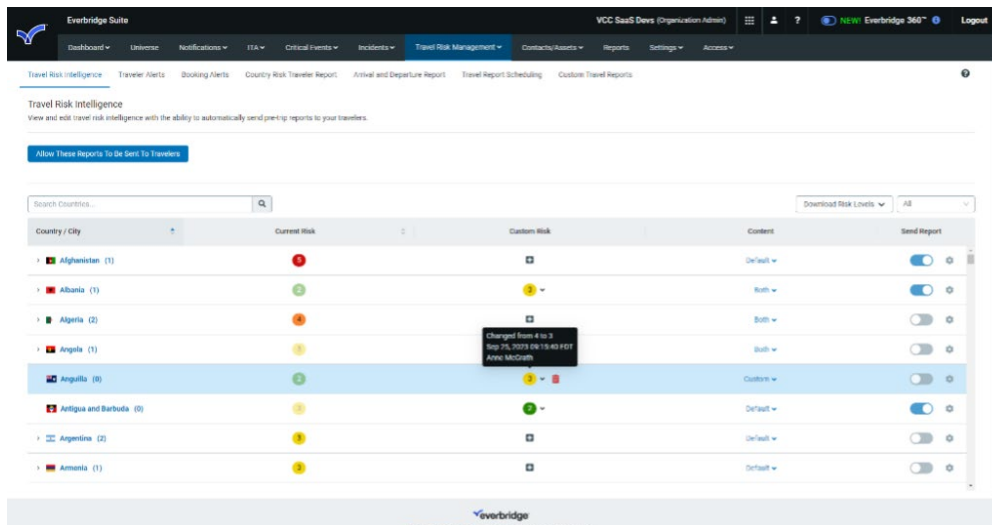
- Everbridge CEM for **Business Operations** (Standard and Advanced).
- Everbridge CEM for **People Resilience** (Standard and Advanced).

This capability is only available via <https://manager.everbridge.net>. Reach out to your Everbridge Account Manager for more details.

Resilience Insights user guide

Everbridge Travel Protector™

Support for additional contact information and custom reports



The screenshot displays the Everbridge Travel Protector interface. At the top, there is a navigation bar with the Everbridge logo and various menu items like Dashboard, Universe, Notifications, ITA, Critical Events, Incidents, Travel Risk Management, Contacts/Assets, Reports, Settings, and Access. Below the navigation bar, there is a section titled "Travel Risk Intelligence" with a sub-header "View and edit travel risk intelligence with the ability to automatically send pre-trip reports to your travelers." A blue button labeled "Allow These Reports to be Sent to Travelers" is visible. The main content area features a search bar for countries and a table with columns for Country/City, Current Risk, Custom Risk, Content, and Send Report. The table lists several countries with their respective risk ratings and report settings. A tooltip is visible over the "Custom Risk" column for Angola, indicating a change from 4 to 3.

Country / City	Current Risk	Custom Risk	Content	Send Report
Afghanistan (1)	4		Default	On
Albania (1)	2	3	Both	On
Algeria (2)	3		Both	Off
Angola (1)	3	3	Both	Off
Angola (8)	2	3	Custom	On
Antigua and Barbuda (8)	3	3	Default	On
Argentina (2)	3		Default	Off
Armenia (1)	3		Default	Off

Everbridge Travel Protector: Keep your employees safe wherever they go.

- Create and schedule custom travel reports using any itinerary or traveler information as data fields or filters, such as PNR numbers, segment type, departure or arrival country, country risk ratings, day and time, and traveler profile attributes.
- Easily customize city/country intelligence reports, risk ratings, and pre-trip advisories for travelers.

Travel Protector solution is available:

- As a standalone solution for travel contacts only.
- As an add-on to Everbridge CEM for People Resilience (Essentials, Standard, and Advanced).

Travel Protector is globally available and can be used for domestic or international travel. View [data sheet](#) or reach out to your Everbridge account manager.

[View data sheet](#)



© Everbridge, Inc. Confidential & Proprietary

[View In Browser](#) | [Contact Us](#)