



# Critical Event Management Platform Update

June 2023 | What's new?



## Enhancing Safety and Efficiency for Your Organization

We are excited to announce our latest CEM platform release update, packed with powerful features and enhancements designed to elevate the safety and efficiency of your organization. This release introduces new solutions, such as Everbridge Travel Protector™, a comprehensive travel risk management and critical event management solution. Additionally, we have made significant updates to our Resilience Insights and Flow Designer capabilities, enabling you to leverage advanced analytics, actionable insights, and customizable workflows.

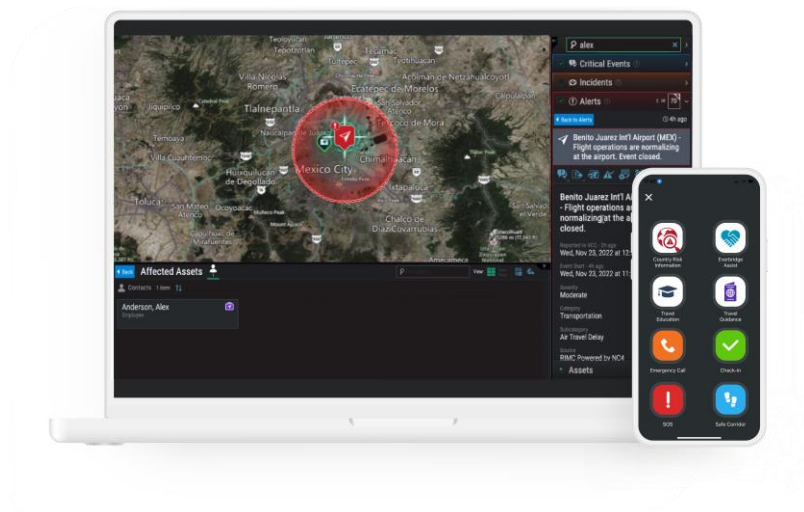
With these new additions, we are committed to providing you with the tools and intelligence necessary to navigate today's complex risk landscape while ensuring the well-being of your employees. We invite you to explore the details of our new

release and discover how it can empower your organization to proactively address challenges, enhance resilience, and streamline operations.

Stay tuned for more updates as we continue to innovate and deliver solutions that align with your evolving needs.

## Everbridge Travel Protector™

*Keep your employees safe, wherever they go*



Travel Protector combines travel risk management and critical event management in a unified interface, providing the best of both worlds.

- Get a 360° view of potential dangers for people traveling domestically or internationally.
- Visualize travelers' information in a single common operating picture for easy monitoring and response coordination.
- Quickly and confidently locate and alert travelers based on travel itinerary data, mobile-app location check-in, and more.
- Search or use a wide range of filters to access travel data by locations, airports, flights, train, car rental, travelers, hotels, by date range.
- Deliver traveler notifications based on risk events to keep them informed and safe.
- Easily customize city/country intelligence reports and pre-trip advisories for travelers

- Configure any number of booking alerts based on traveler, location, country, or risk rating.
- Empower employees and travelers to feel safe with pre-trip advisories and access to city/country risk intelligence reports, a dedicated education portal for traveler safety, notifications, and one-touch assistance, all through one mobile app.

The Travel Protector solution is available:

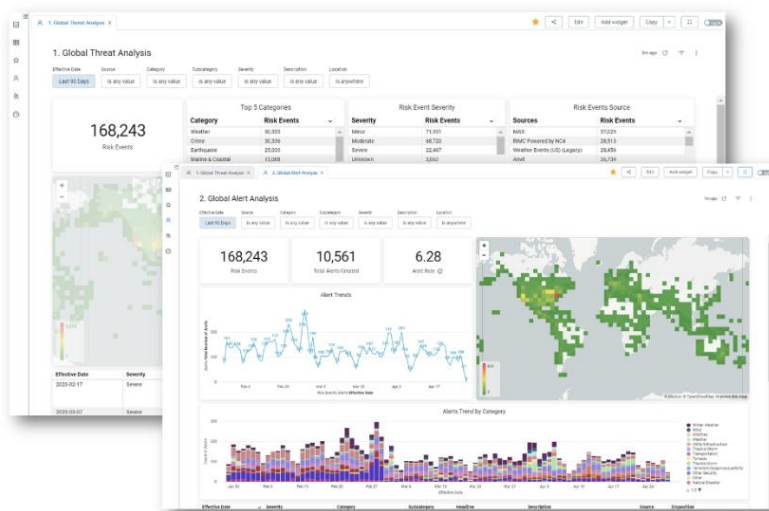
- As a standalone solution for travel contacts only
- As an add-on to Everbridge CEM for People Resilience (Essentials, Standard or Advanced)

Travel Protector is globally available and can be used for domestic or international travel. For more details, reach out to your Everbridge Account Manager.

[View Data Sheet](#)

## Resilience Insights – Custom Dashboards

Advanced analytics and actionable insights to help organizations gain a comprehensive understanding of the impact of operational disruptions.



Everbridge Resilience Insights provides access to Everbridge's rich risk intelligence data to deliver actionable insights with precision, agility, and confidence at scale.

- Fully configurable dashboards and visualizations tailored to your organization's needs,
- Access up to 24-months of historical risk event data for thorough analysis,
- Monitor trends in alerts that have an impact on your organization.
- Perform risk analysis at various levels including Country, State, City or Address,
- Share customized dashboards with internal stakeholders to enhance collaboration and alignment

This add-on capability is available to:

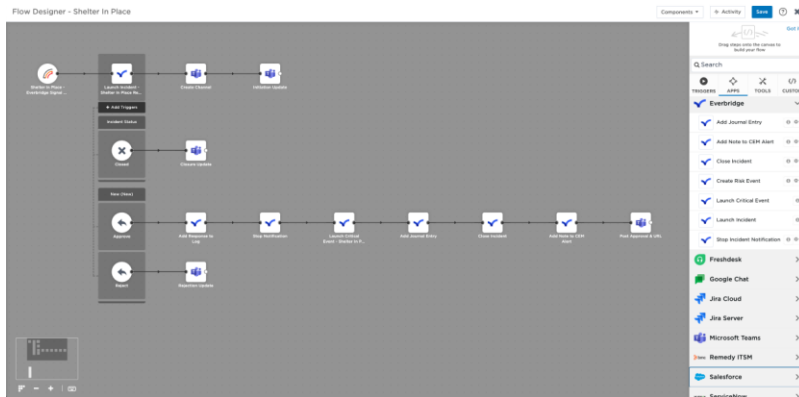
- Everbridge CEM for Business Operations (Standard and Advanced)
- Everbridge CEM for People Resilience (Standard and Advanced)

This capability is only available via <https://manager.everbridge.net>. Reach out to your Everbridge Account Manager for more details.

[View Resilience Insights Guide](#)

## Everbridge Flow Designer

Create workflows and automate end-to-end processes



## Flow Designer: Empowering Custom Workflows with Ease and Flexibility

- Enjoy a Low-code/no-code workflow designer interface, eliminating the need for coding skills,
- Utilize an Intuitive drag and drop interface for seamless usability,
- Create your own processes and define custom steps according to your unique requirements
- Seamlessly integrate Everbridge capabilities with other applications you use

### Examples of Flow Designer in action:

- Enable a GSOC analyst to initiate a request for critical event approval and track its status.
- Empower process teams to develop new customized steps within workflows.
- Automatically trigger the launch of a critical event once approval is granted.
- Serve as a foundation for rapidly building new use cases and expanding capabilities.

### Flow Designer is available:

- As part of new and existing subscriptions of any of the following CEM solution bundles of at no extra cost:
  - Business Operations
  - People Resilience
  - Smart Security

- Public Safety
  - As an add-on to an active subscription of point products and solutions hosted on the Everbridge CEM platform.

Please contact your account manager for activation and details. Flow Designer is Globally available. Requires API access

[Learn More](#)

## Security and Compliance

The Everbridge Critical Event Management (CEM) platform, including Visual Command Center, has completed its annual US FedRAMP authorization. [The FedRAMP Program Management Office \(PMO\)](#) certifies that the Everbridge CEM platform meets the standards for the controls in the FedRAMP Moderate baseline and passed the rigorous security and risk management renewal process required to support the operational resilience needs of federal agencies, a mandate for any cloud service provider that serves the federal government. This capability is only available via <https://manager.everbridge.net>

[Learn More](#)



© Everbridge, Inc. Confidential & Proprietary

[View In Browser](#) | [Contact Us](#)